

local
properties
buy • sell • let



52 Cleckheaton Road
Bradford, BD6 1BE

£134,950
Freehold

***** THREE BEDROOM TERRACE HOUSE - ACCOMMODATION SET OVER THREE FLOORS - LOUNGE & DINING KITCHEN - NO CHAIN ***** This property has PVCu double glazing and gas central heating and comprises: entrance vestibule, lounge, dining kitchen, cellar, landing, two first floor bedrooms (en-suite shower to bed one), bathroom, loft bedroom three. To the outside there are gardens front and rear and on street parking to the front. Located close to all amenities, the property also provides good access to the city centre and the M62. A spacious property which would make an ideal family home, viewing is recommended.



- THREE BEDROOM TERRACE HOUSE • ACCOMMODATION SET OVER THREE FLOORS • GCH & PVCu DG

ENTRANCE VESTIBULE

Door to front.

LOUNGE

14'1" x 11'1"

Window to front. Radiator. Fireplace surround and inset Living Flame gas fire.

DINING KITCHEN

14'1" x 12'5"

Door and window to rear. Base and wall units. Inset stainless steel sink and drainer unit. Gas hob, electric oven and extractor hood. Tiled splashbacks. Plumbed for automatic washing machine. Access to cellar.

STAIRS AND LANDING

BEDROOM ONE

14'1" x 10'9"

Window to front. Radiator.

EN SUITE SHOWER ROOM

Fully tiled. Three piece suite comprising: shower cubicle, low flush wc and pedestal wash hand basin.

BEDROOM TWO

9'6" x 9'2"

Window to rear. Radiator.

BATHROOM

Window to rear. Radiator. Part tiled. Three piece suite comprising: bath, low flush wc and pedestal wash hand basin.

LOFT BEDROOM THREE

17'8" x 12'9"

Velux window to front. Radiator.

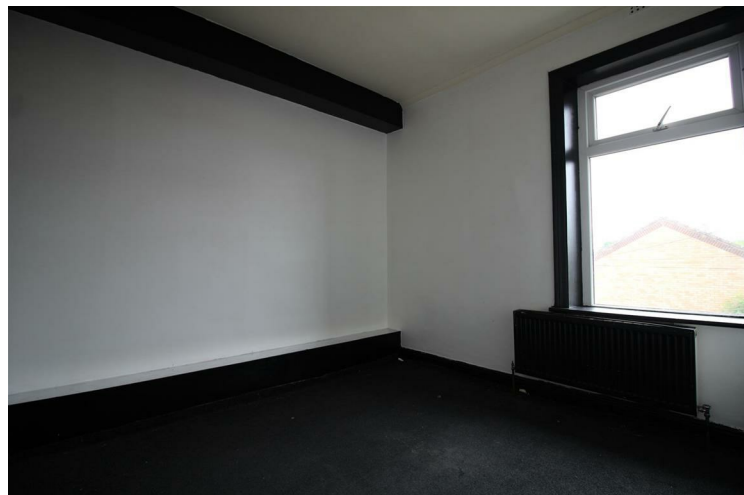
EXTERIOR

Enclosed garden to front. Enclosed garden to rear. On street permit parking.

HOW TO GET THERE



• LOUNGE & DINING KITCHEN • TWO FIRST FLOOR BEDROOMS • EN-SUITE SHOWER ROOM TO BED ONE



- LOFT BEDROOM THREE • THREE PIECE BATHROOM SUITE • GARDENS FRONT & REAR • NO CHAIN

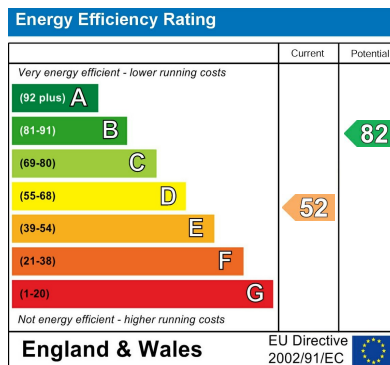
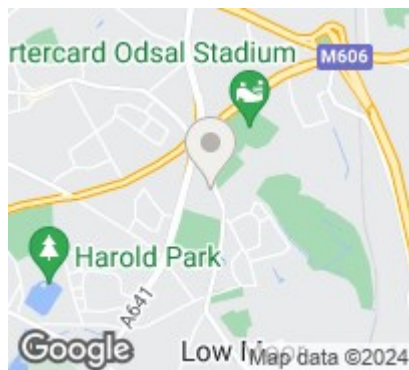




Additional Information

Local Authority - Bradford Council
Council Tax - Band B
Viewings - By Appointment Only

Floor Area - 1022.58 sq ft
Tenure - Freehold



Agents Note: Whilst every care has been taken to prepare these particulars, they are for guidance purposes only. All measurements are approximate and are for general guidance purposes only and whilst every care has been taken to ensure their accuracy, they should not be relied upon and potential buyers/tenants are advised to recheck the measurements

Birstall Sales
Midland Bank Chambers
Smithies Lane
Birstall
Batley
West Yorkshire
WF17 9EB

01924 474456
info@localproperties.net
<http://www.localproperties.net/>

